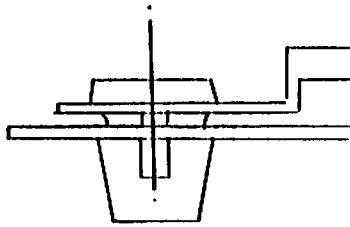
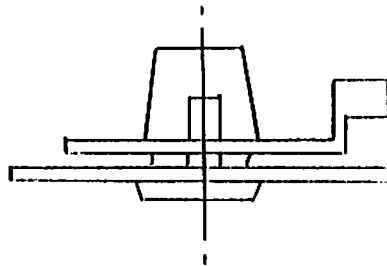


Fit the retaining clips to the operative levers at the latch and the outside handle by inserting the plastic moulding from the top as shown in the diagram below.



The retaining clip fitted to the slotted operating lever on the latch should be fitted as shown below.



Fit the striker to the latch.

Fit end "A" of the locking rod into the locking lever on the latch. (The lever nearest the outer shell of the door). Position the other end of the rod over the lever on the outer handle. Mark the rod where a bend is required to take the rod through the hole in the lever. Remove rod, bend and cut rod $\frac{3}{8}$ " from bend.

Re-fit rod to clips in both levers, check operation.

Similarly fit the "A" end of the operating rod in the operating lever at the latch and repeat as above.

6. Fit door hinges to door shell, as shown below.

